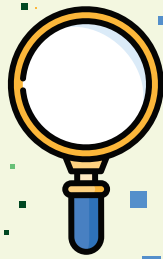


## Seneca Meadows Facts



It is important for everyone to understand the actual facts about Seneca Meadows.



# Facts vs. Myths

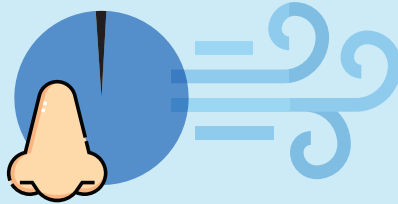


## Just the Facts, Please

You may have seen some of the myths about the Seneca Meadows landfill—typically repeated as if they are facts by a small group of vocal opponents.

## Effectiveness of Odor Controls

Since 2022, in air monitoring at the facility's perimeter, detections of hydrogen sulfide, the main compound associated with landfill odors, have been extremely rare. In excess of 98% of the time hydrogen sulfide has not even been detected.



H2S Non Detect  
**98%**

## Tourism Growth




Seneca County +  
**22%**

Data shows that local tourism in Seneca County is thriving.

According to Empire State Development, tourism in the Finger Lakes Region in 2022 (\$3.98B) grew by nearly 25% percent over 2021 levels (\$3.19B).

Tourism in Seneca County increased by 22.2%—surpassing pre-pandemic levels.

## Economic Impacts



**\$5M** to Charities/Causes  
**\$75M** to Local Government  
**\$72M** Annual Impact

Since 1983, we've proudly donated more than \$5 million to local charitable causes and organizations. Our Host Community Agreements with Seneca Falls and Waterloo have generated more than \$75 Million of revenue for local governments. These critical funds help hold the line on local taxes, and pay for critical services from first responders.

## Air Quality

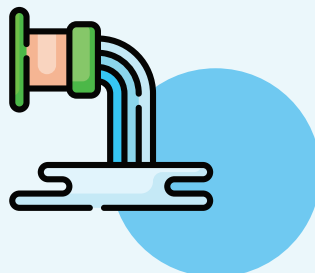
NYSDEC has conducted multiple area community air screening programs. The reports concluded that the results "would not be considered a potential health threat or an immediate public health concern" and noted that "all results were similar to concentrations found in NYSDEC's ambient air monitoring network."



## Misconceptions about Chemicals



Landfills were identified by EPA as a preferred option to manage PFAS impacted waste streams.



Seneca Meadows does not manufacture or use PFAS. Rather, Seneca Meadows receives discarded materials containing PFAS that are ubiquitous in residential and commercial waste streams. Landfills sequester most of the PFAS they receive.

Seneca Meadows follows all leachate disposal requirements. Locally, Seneca Meadows goes even further - leachate sent to a local wastewater treatment plant is first treated to remove PFAS, and the plant does not discharge to the Finger Lakes.

For more detail about these topics go to [www.senecameadows.com/facts](http://www.senecameadows.com/facts)